

3A, 80V, 200kHz Step-Down Converter

FEATURES

- Wide 4.5V to 80V Operating Input Range
- Output Adjustable from 0.8V to 40V
- Programmable Maximum Peak Current
- 130mΩ Internal Power MOSFET Switch
- 89.1% Efficiency at $V_{IN}=80V$, $V_{OUT}=15V@1A$
- 76.8% Efficiency at $V_{IN}=80V$, $V_{OUT}=5V@1A$
- Fixed 200kHz Frequency
- Thermal Shutdown
- Cycle-by-Cycle Over Current Protection
- Available in SOP-8 Exposed Pad Package

APPLICATIONS

- Balance Bike
- Ebike
- USB Power Supplies
- Communication equipment

DESCRIPTION

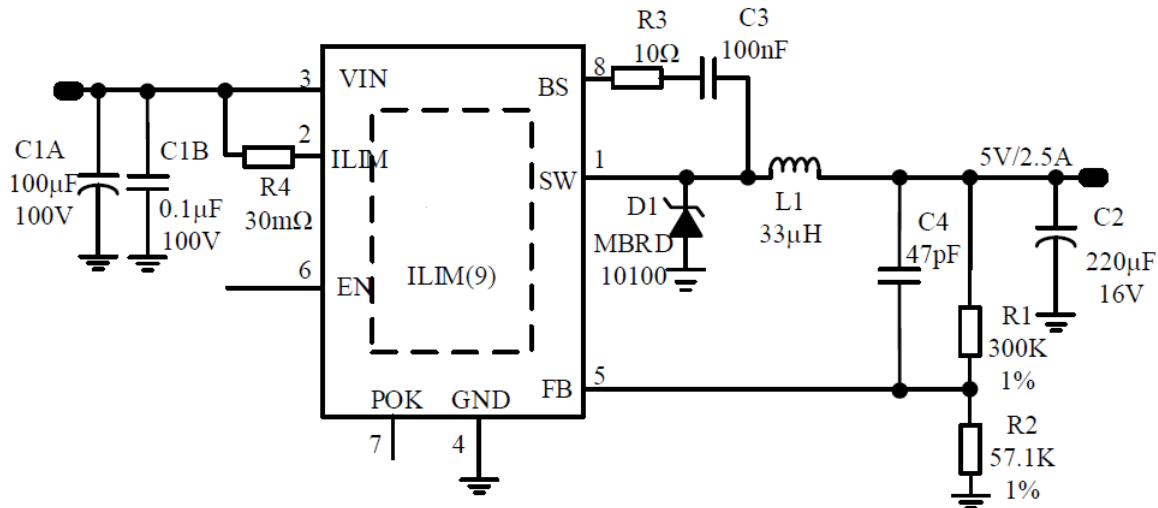
The AIC2983B is a monolithic step-down switch mode converter. It achieves 3A continuous output current over a wide input supply range with excellent load and line regulation.

The maximum peak current can be programmed by sensing current through an accurate sense resistor.

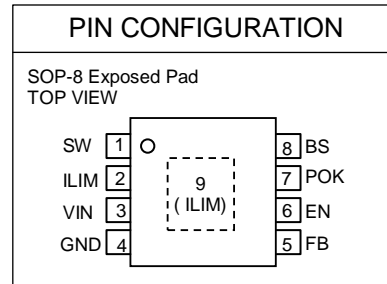
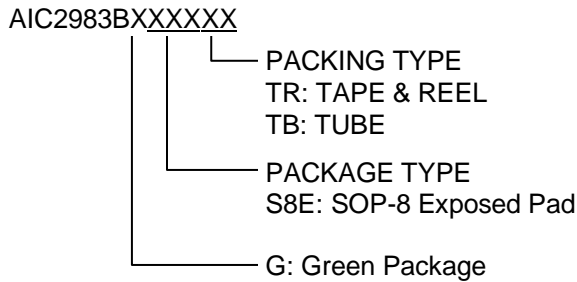
Fault condition protection includes cycle-by-cycle current limiting and thermal shutdown.

The AIC2983B requires a minimum number of readily available standard external components. The AIC2983B is available in SOP-8 exposed pad package.

APPLICATIONS CIRCUIT



Typical Application Circuit

ORDERING INFORMATION


Example: AIC2983BGS8ETR
 → Green SOP-8 Exposed Pad Package
 and Tape & Reel Packing Type

ABSOLUTE MAXIMUM RATINGS

| | |
|---|--------------------------|
| VIN Pin and ILIM Pin Voltage | 82V |
| SW Pin Voltage | -0.3V to $V_{IN} + 0.3V$ |
| BS Pin Voltage | $V_{SW} + 6.0V$ |
| POK Pin Voltage | 0V to 45V |
| All Other Pins Voltage | -0.3V to +6.5V |
| Junction Temperature..... | 150°C |
| Lead Temperature | 260°C |
| Storage Temperature Range | - 65°C ~ 150°C |
| Operating Ambient Temperature Range | - 40°C ~ 85°C |
| Thermal Resistance Junction to Case SOP-8 Exposed Pad*..... | 15°C/W |
| Thermal Resistance Junction to Ambient SOP-8 Exposed Pad*..... | 50°C/W |

(Assume no Ambient Airflow)

Absolute Maximum Ratings are those values beyond which the life of a device may be impaired.

* Measured on approximately 42x45mm² of 1 oz copper.

■ ELECTRICAL CHARACTERISTICS
($V_{IN}=12V$, $T_A=25^{\circ}C$, unless otherwise specified.) (Note1)

| PARAMETER | SYMBOL | CONDITIONS | MIN | TYP | MAX | UNITS |
|--|--------------------|-----------------------------|-------|-------|-------|-------------|
| Supply Voltage | V_{IN} | | 4.5 | | 80 | V |
| Output Voltage | V_{OUT} | | 0.8 | | 40 | V |
| Feedback Voltage | V_{FB} | $4.5V \leq V_{IN} \leq 80V$ | 0.785 | 0.805 | 0.825 | V |
| Feedback Bias Current | $I_{BIAS(FB)}$ | $V_{FB} = 0.8V$ | | 10 | | nA |
| Switch On Resistance | $R_{DS(ON)}$ | | | 130 | | m Ω |
| Current Limit(Note 2) | | | 1.2 | 1.35 | 1.5 | A |
| Oscillator Frequency | f_{SW} | $V_{FB} = 0.6V$ | 160 | 200 | 240 | kHz |
| Fold-Back Frequency | | $V_{FB} = 0V$ | | 70 | | kHz |
| Boot-Strap Voltage | $V_{BST} - V_{SW}$ | | | 6 | | V |
| Minimum On Time(Note 3) | T_{ON} | $V_{FB} = 1V$ | | 100 | | ns |
| Under Voltage Lockout Threshold Rising | | | 3.0 | 3.3 | 3.6 | V |
| Under Voltage Lockout Threshold Hysteresis | | | 200 | | | mV |
| Supply Current (Quiescent) | | $V_{EN} = 2V, V_{FB} = 1V$ | | 400 | 700 | μA |
| Thermal Shutdown(Note 3) | | | | 160 | | $^{\circ}C$ |

Note 1: Specifications are production tested at $T_A=25^{\circ}C$. Specifications over the $-40^{\circ}C$ to $85^{\circ}C$ operating temperature range are assured by design, characterization and correlation with Statistical Quality Controls (SQC).

Note 2: Sense resistor defined.

Note 3: Guaranteed by design.

■ TYPICAL PERFORMANCE CHARACTERISTICS

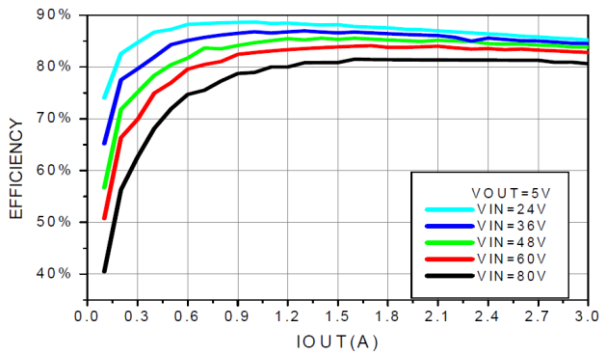


Fig. 1 Efficiency vs. Output Current

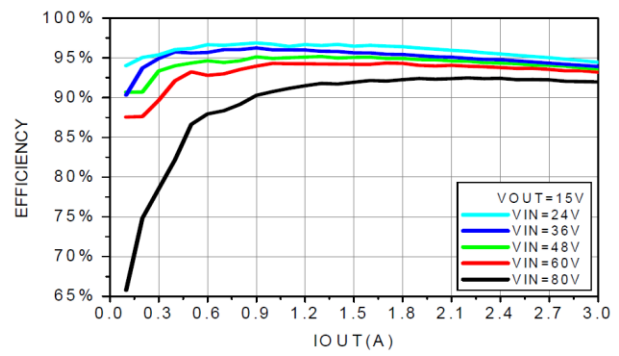


Fig. 2 Efficiency vs. Output Current

■ PIN DESCRIPTIONS

| Pin No. | Pin Name | Pin Function |
|---------|----------|--|
| 1 | SW | Switch Output. Connect this pin to the switching end of the inductor. |
| 2, 9 | ILIM | Programmable maximum peak current pin by sensing current through an accurate sense resistor between this pin and VIN pin. |
| 3 | VIN | Supply Voltage. The AIC2983B operates from a +4.5V to +80V unregulated input. C _{IN} is needed to prevent large voltage spikes from appearing at the input. Put C _{IN} as close to the IC as possible. It is the drain of the internal power device and power supply for the whole chip. |
| 4 | GND | Ground. This pin is the voltage reference for the regulated output voltage. For this reason care must be taken in its layout. This node should be placed outside of the D ₁ to C _{IN} ground path to prevent switching current spikes from inducing voltage noise into the part. |
| 5 | FB | Feedback. An external resistor divider from the output to GND, tapped to the FB pin sets the output voltage. To prevent current limit run away during a short circuit fault condition the frequency-fold-back comparator lowers the oscillator frequency when the FB voltage is below 250mV. |
| 6 | EN | Enable pin. Connect to low off the chip, Floating is enable. |
| 7 | POK | Power good signal. When FB is less than 90% of 0.8V, PGOOD is low. It is an open-drain output. Use a high value pull-up resistor externally to pull it up to system power supply. |
| 8 | BS | Bootstrap. This pin acts as the positive rail for the high-side switch's gate driver. Connect a 100nF ceramic capacitor and 10ohm resistor between this pin and SW. |

■ APPLICATION INFORMATION

Main Control Loop

The AIC2983B is a current mode buck regulator. That is, the error amplifier (EA) output voltage is proportional to the peak inductor current. At the beginning of a cycle, the integrated high side power switch M1 is off; the EA output voltage is higher than the current sense amplifier output; and the current comparator's output is low. The rising edge of the 200kHz clock signal sets the RS Flip-Flop. Its output turns on M1 thus connecting the SW pin and inductor to the input supply.

The increasing inductor current is sensed and amplified by the Current Sense Amplifier. Ramp compensation is added to Current Sense Amplifier output and compared to the Error Amplifier output by the PWM Comparator. When the Current Sense Amplifier plus Slope Compensation signal exceeds the EA output voltage, the RS Flip-Flop is reset and the AIC2983B reverts to its initial M1 off state. If the Current Sense Amplifier plus Slope Compensation signal does not exceed the COMP voltage, then the falling edge of the CLK resets the Flip-Flop. The output of the Error Amplifier integrates the voltage difference between the feedback and the 0.8V bandgap reference. The polarity is such that a FB pin voltage, which is lower than 0.8V, increases the EA output voltage. Since the EA output voltage is proportional to the peak inductor current, an increase in its voltage increases current delivered to the output. An external Schottky Diode (D₁) carries the inductor current when internal power MOS is off.

Setting the Output Voltage

The external resistor divider is used to set the output voltage (see the schematic on front page). The feedback resistor R₁ also sets the feedback loop bandwidth with the internal compensation capacitor.

Choose R₁ to be around 300kΩ for optimal transient response. R₂ is then given by:

$$R_2 = \frac{R_1}{\frac{V_{OUT}}{0.805} - 1}$$

Table 1 Resistor Selection for Common

| V _{OUT} (V) | R ₁ (kΩ) | R ₂ (kΩ) |
|----------------------|---------------------|---------------------|
| 3.3 | 300(1%) | 96(1%) |
| 5 | 300(1%) | 57.1(1%) |
| 12 | 300(1%) | 21.4(1%) |
| 15 | 300(1%) | 16.9(1%) |
| 24 | 300(1%) | 10.2(1%) |
| 32 | 300(1%) | 7.6(1%) |

Selecting the Inductor

33μH to 100μH inductor with a DC current rating of at least 30% percent higher than the maximum load current is recommended for most applications. For highest efficiency, the inductor DC resistance should be less than 50mΩ. For most designs, the inductance value can be derived from the following equation.

$$L = \frac{V_{OUT} \times (V_{IN} - V_{OUT})}{V_{IN} \times \Delta I_L \times f_{SW}}$$

Where ΔI_L is the inductor ripple current. Choose inductor current ripple to be approximately 30%–40% of the maximum load current. The maximum inductor peak current is:

$$I_{L(MAX)} = I_{OUT(MAX)} + \frac{\Delta I_L}{2}$$

Under light load conditions below 100mA, larger inductance is recommended for improved efficiency.

Selecting the Input Capacitor

The input capacitor reduces the surge current drawn from the input and also the switching noise from the device. The input capacitor impedance at the switching frequency should be less than the input

source impedance to prevent high frequency switching current from pass to the input. For most applications, a 100 μ F electrolytic capacitor is sufficient.

Selecting the Output Capacitor

The output capacitor keeps output voltage ripple small and ensures regulation loop stability. The output capacitor impedance should be low at the switching frequency. A 220 μ F electrolytic capacitor is recommended.

ILIM sense resistor

Power current flows into the chip via the external accuracy sense resistor which defined the maximum peak current. In guarantee under the normal start up with full load, the sense resistor is recommended use the larger value to ensure less surge current and output short power dissipation.

Table 2 Sense Resistor Selection

| Max. output current (A) | R _{sense} (m Ω) |
|-------------------------|----------------------------------|
| 1.0 | 50 |
| 1.5 | 40 |
| 2.0 | 30 |
| 3.0 | 20 |

Loop compensation

A 22pF to 82pF ceramic capacitor connected between FB and OUT can optimize the loop stability for both bandwidth and phase margin, recommended a 47pF ceramic capacitor in most case.

PCB Layout

(1) Under the large output current and high input voltage case, the schottky diode and the converter is the main heat source, don't put them too close, the PCB layout should keep enough area for heat dissipation. Recommended ratio is 6:4 for schottky diode and the converter, for the cost issues, the normal selection of PCB is 1oz thickness, the thick

solder tin is benefit on heat dissipation.

(2) ILIM is internal connected the power MOS, the heat dissipation should be considered for this pin.

(3) The large current path (ILIM, SW) should be put closer the converter as possible, use short, straight, wide copper foil connect.

(4) Input capacitor should be put as close as possible to VIN pin and GND.

(5) The loop of input capacitor, internal power MOS and schottky diode is the highest di/dt radiation region, reduce this region as possible. A 0.1 μ F ceramic capacitor can be used to form a small loop with internal power MOS and schottky diode, which can reduce the switch ringing caused by PCB parasitic inductor.

(6) The outside feedback resistor should be placed nearby the FB pin and keep away from SW node.

(7) A 220pF ceramic capacitor between VIN pin and SW pin can be used to reduce the switch negative overshoot when needed.

(8) In heavy load application, 2 oz or 4-layers PCB is needed. The schottky diode is the most critical thermal issue in such case, a low V_F schottky diode is recommended.

Figures 3 to 5 show the layout diagrams of AIC2983B.

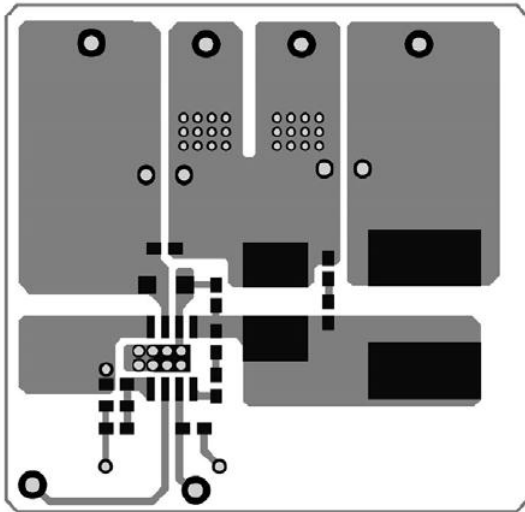


Fig. 3 Top Layer

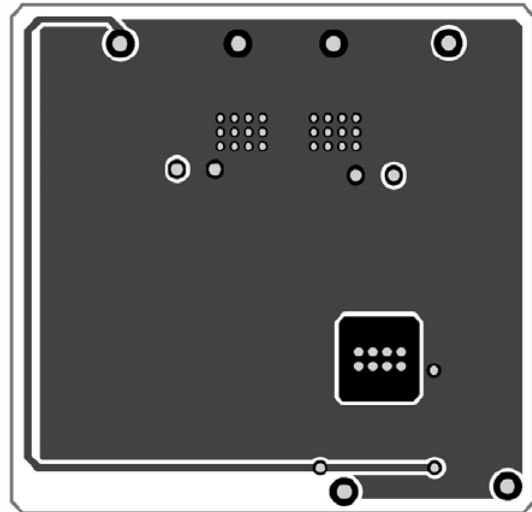


Fig. 4 Bottom Layer

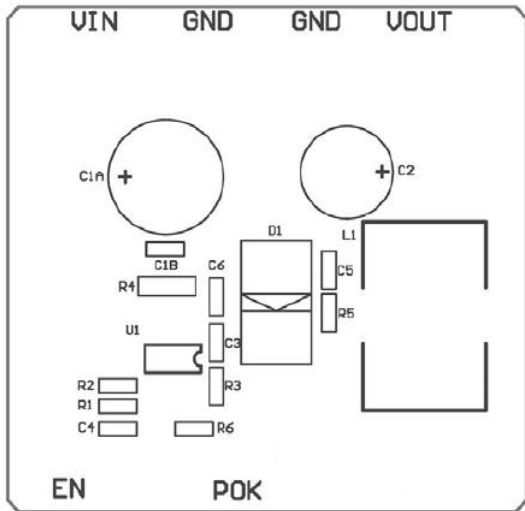


Fig. 5 Top Component Placement

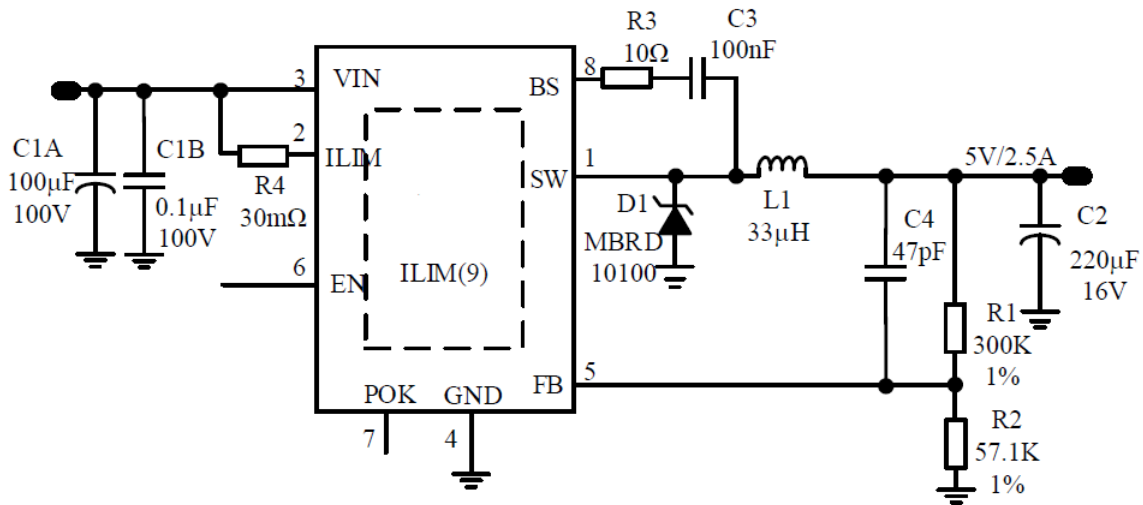
APPLICATION EXAMPLES


Fig. 6 AIC2983B Application Circuit for 5V/2.5A Output Application

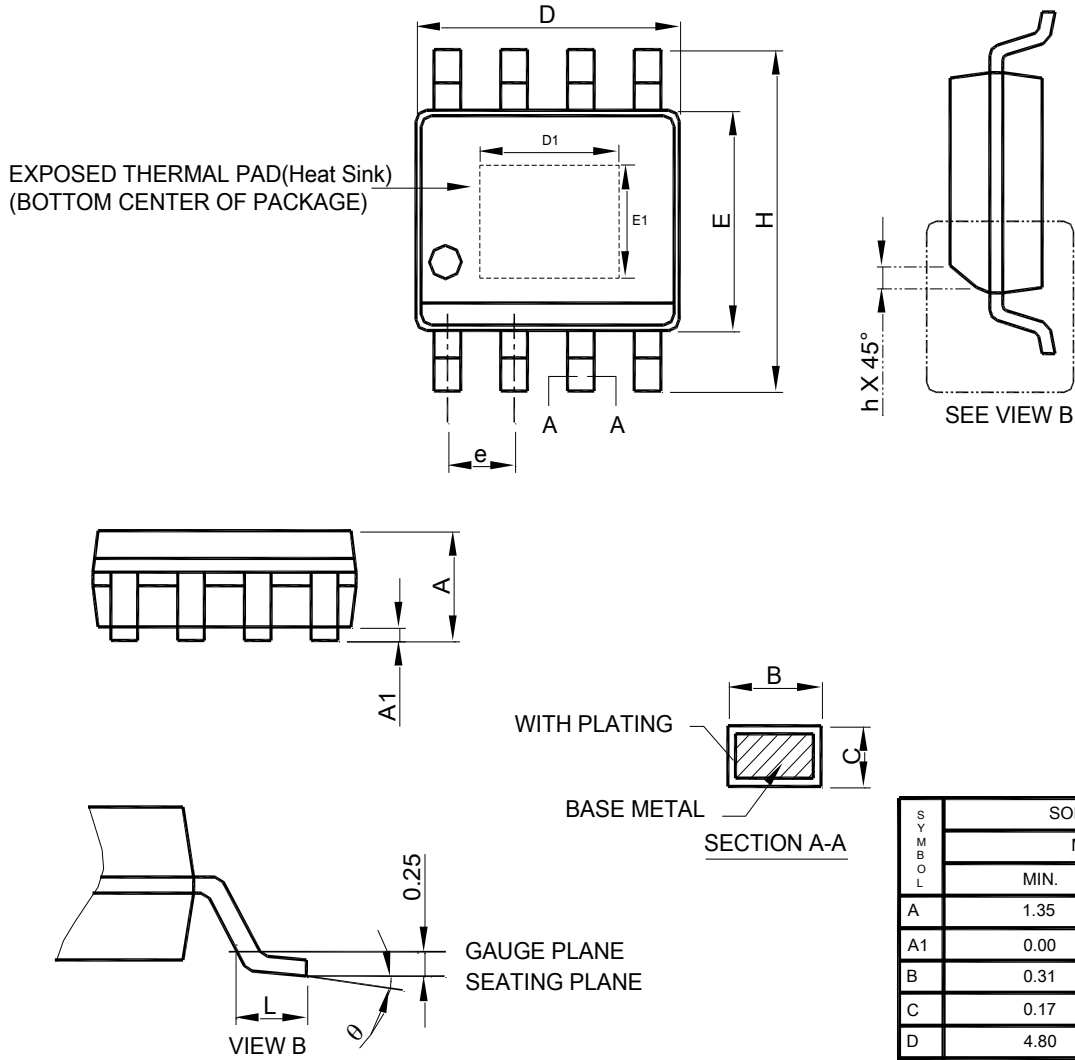
Table 3 BOM List for 5V/2.5A Output Application

| Ref | Value | Description | Package | Manufacturer | Qty | Manufacturer P/N |
|-----|--------|------------------------------|---------|--------------|-----|------------------|
| C1A | 100µF | Electrolytic, 100V | ELC SMD | jiang hai | 1 | VTD-100V100 |
| C1B | 0.1µF | Ceramic capacitor, 100V | 0603 | muRata | 1 | GRM188R71C104K |
| C2 | 220µF | Electrolytic, 16V | ELC SMD | jiang hai | 1 | VTD-100V220 |
| C3 | 100nF | Ceramic capacitor, 25V, X7R | 0603 | muRata | 1 | GRM188R71C104K |
| C4 | 47pF | Ceramic, capacitor 25V, X7R | 0603 | muRata | 1 | GRM32DR71E470K |
| C5 | 220pF | Ceramic, capacitor 100V, X7R | 0603 | muRata | 1 | GRM32DR71E221K |
| D1 | 10A | Schottky Diode, 100V, 10A | TO252 | OnSemi | 1 | MBRD10100 |
| L1 | 33µH | DR127, 3A, 60mΩ | | Cooper | 1 | DR127-330 |
| R1 | 300kΩ | Film Res., 1%, 300kΩ | 0603 | Panasonic | 1 | ERJ-3EKF3003V |
| R2 | 57.1kΩ | Film Res., 1%, 57.1kΩ | 0603 | Panasonic | 1 | ERJ-3EKF5712V |
| R3 | 10Ω | Film Res., 1%, 10Ω | 0603 | Panasonic | 1 | ERJ-3EKF0011V |
| R4 | 30mΩ | Film Res., 1%, 30mΩ | 1206 | | 1 | |
| U1 | | DC-DC convertor | SOP-8E | AIC2983B | 1 | |

Note: recommended to use a low V_F schottky diode for efficiency promotion.

■ PHYSICAL DIMENSIONS

● SOP-8 Exposed Pad



Note : 1. Refer to JEDEC MS-012E.

2. Dimension "D" does not include mold flash, protrusions or gate burrs. Mold flash, protrusion or gate burrs shall not exceed 6 mil per side .
3. Dimension "E" does not include inter-lead flash or protrusions.
4. Controlling dimension is millimeter, converted inch dimensions are not necessarily exact.

| SYMBOL | SOP-8 Exposed Pad | |
|--------|-------------------|------|
| | MILLIMETERS | |
| | MIN. | MAX. |
| A | 1.35 | 1.75 |
| A1 | 0.00 | 0.15 |
| B | 0.31 | 0.51 |
| C | 0.17 | 0.25 |
| D | 4.80 | 5.00 |
| D1 | 1.50 | 3.50 |
| E | 3.80 | 4.00 |
| E1 | 1.0 | 2.55 |
| e | 1.27 BSC | |
| H | 5.80 | 6.20 |
| h | 0.25 | 0.50 |
| L | 0.40 | 1.27 |
| θ | 0° | 8° |

Note:

Information provided by AIC is believed to be accurate and reliable. However, we cannot assume responsibility for use of any circuitry other than circuitry entirely embodied in an AIC product; nor for any infringement of patents or other rights of third parties that may result from its use. We reserve the right to change the circuitry and specifications without notice.

Life Support Policy: AIC does not authorize any AIC product for use in life support devices and/or systems. Life support devices or systems are devices or systems which, (i) are intended for surgical implant into the body or (ii) support or sustain life, and whose failure to perform, when properly used in accordance with instructions for use provided in the labeling, can be reasonably expected to result in a significant injury to the user.