

2A 23V Synchronous PWM/PSM Step-Down Converter with High Light-load Efficiency

FEATURES

- 2A Continuous Output Current
- Wide 4.75V to 23V Operating Input Range
- Output Adjustable from 0.925V to 12V
- Up to 89% Efficiency for Heavy Load (Vin=12V, Vout=3.3V, Iout=2.0A)
- Up to 92% Efficiency for Moderate Load (Vin=12V, Vout=3.3V, Iout=1.0A)
- Up to 81% Efficiency for Light Load (Vin=12V, Vout=3.3V, Iout=20mA)
- Low Rds(on) Internal Switches: 140mΩ and 120mΩ
- <3μA Supply Current in Shutdown Mode
- 340KHz/550KHz Frequency
- Programmable Soft Start
- Thermal Shutdown
- Cycle by Cycle Over Current Protection
- Under Voltage Lockout
- Short Circuit Protection
- Over Voltage Protection

APPLICATIONS

- Networking Systems such as Modems & Routers
- Distributed Power Systems
- Pre-Regulator for Linear Regulators
- Set-top Box

DESCRIPTION

The AIC2862 is a 2A synchronous-rectified Buck converter with integrated low Rds(on) power MOSFETs. The AIC2862, designed with a current-mode control scheme, can convert wide input voltage to the adjustable output voltage to provide excellent output voltage regulation. It is stable with low ESR output ceramic capacitors.

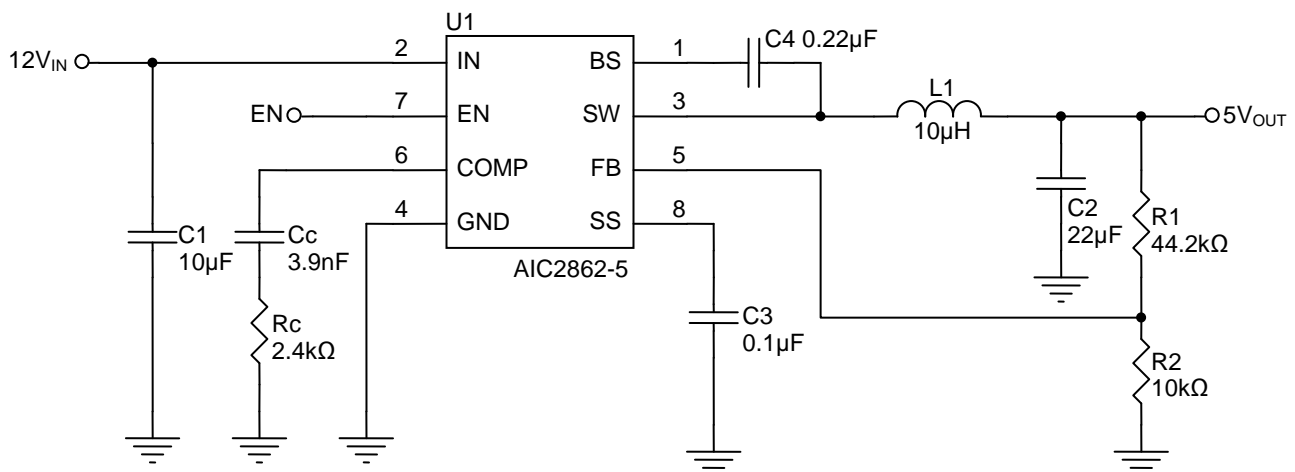
For high efficiency over all load current range, the

AIC2862 is equipped with an automatic PSM/PWM mode operation. At light load, the IC operates in the PSM (Pulse Skipping Mode) to reduce switching losses. At heavy load, the IC works in PWM mode to provide high efficiency and excellent output voltage regulation.

The AIC2862 is also equipped with softstart and whole protections (under-voltage, over-voltage, over-temperature, short circuit and current-limit) into a single package.

This device, available in SOP-8 package, provides a very compact system solution with minimal external components and PCB area.

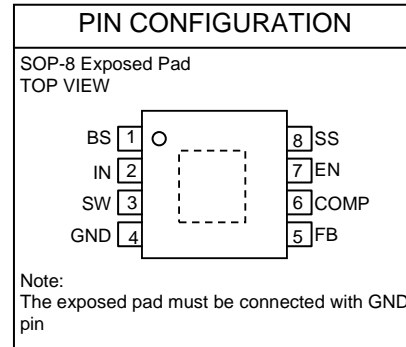
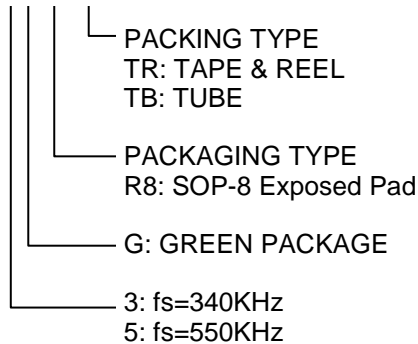
TYPICAL APPLICATIONS CIRCUIT



Typical Application Circuit

ORDERING INFORMATION

AIC2862-XXXXXX



Example:

AIC2862-3GR8TR

→ 340KHz with GREEN SOP-8 Exposed
 Pad Package and TAPE & REEL Packing
 Type

ABSOLUTE MAXIMUM RATINGS

Input Voltage (V_{IN}).....	- 0.3V to 26V
SW Pin Voltage (V_{sw})	-1V to $V_{IN} + 0.3V$
BS Pin Voltage	$V_{sw} - 0.3V$ to $V_{sw} + 6V$
EN Pin Voltage.....	- 0.3V to V_{IN}
All Other Pins Voltage.....	- 0.3V to 6V
Operating Ambient Temperature Range T_A	- 40°C ~ 85°C
Operating Maximum Junction Temperature T_J	150°C
Storage Temperature Range T_{STG}	-65°C~150°C
Lead Temperature (Soldering 10 Sec.).....	260°C
Thermal Resistance Junction to Case SOP-8 Exposed Pad*.....	15°C/W
Thermal Resistance Junction to Ambient SOP-8 Exposed Pad*.....	60°C/W
(Assume no Ambient Airflow)	

Absolute Maximum Ratings are those values beyond which the life of a device may be impaired.

*The package is place on a two layers PCB with 2 ounces copper and 2 square inch, connected by 8 vias.

ELECTRICAL CHARACTERISTICS

($V_{IN}=12V$, $V_{EN}=5V$, $T_A=25^{\circ}C$, unless otherwise specified.) (Note1)

PARAMETER	SYMBOL	CONDITIONS	MIN	TYP	MAX	UNITS
Supply Voltage Range			4.75		23	V
Under Voltage Lockout Threshold		V_{IN} Rising	3.7	4.05		V
UVLO Hysteresis				210		mV
Shutdown Supply Current		$V_{EN} = 0V$		0.3	3	μA
Standby Current (Switching)		$V_{EN} = 3.0V$; SW = NC		0.7	1.5	mA
Reference Voltage	V_{REF}		0.900	0.925	0.95	V
Feedback Over Voltage Threshold		V_{FB} Rising		123		%
EN Shutdown Threshold Voltage		V_{EN} Rising	1.1	1.5	2.2	V
EN Shutdown Hysteresis				220		mV
High-Side Switch On-Resistance	$R_{DS(ON)1}$			140		$m\Omega$
Low-Side Switch On-Resistance	$R_{DS(ON)2}$			120		$m\Omega$
High-Side Switch Leakage Current		$V_{EN} = 0V$, $V_{SW} = 0V$		0	10	μA
High-Side Switch Current Limit		Peak Current	2.7	3.4		A
Oscillation Frequency (3 Version) (Note2)	fs		300	340	380	KHz
Oscillation Frequency (5 Version) (Note2)	fs		485	550	615	KHz
Short Circuit Oscillation Frequency		$V_{FB} = 0V$		110		KHz
Maximum Duty Cycle	D_{MAX}			90		%
Minimum On Time	T_{ON}			220		ns
Soft-Start Current		$V_{SS} = 0V$		6		μA
Soft-Start Period		$V_{SS} = 0.1\mu F$		15		ms
Thermal Shutdown		Trip Point		160		$^{\circ}C$

Note 1: Specifications are production tested at $T_A=25^{\circ}C$. Specifications over the $-40^{\circ}C$ to $85^{\circ}C$ operating temperature range are assured by design, characterization and correlation with Statistical Quality Controls (SQC).

Note 2: Referring to the ordering information.

TYPICAL PERFORMANCE CHARACTERISTICS

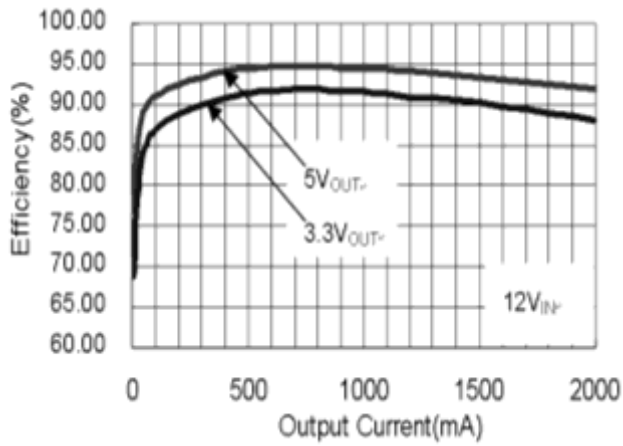


Fig. 1 Efficiency vs. Load Current at $V_{IN} = 12V$

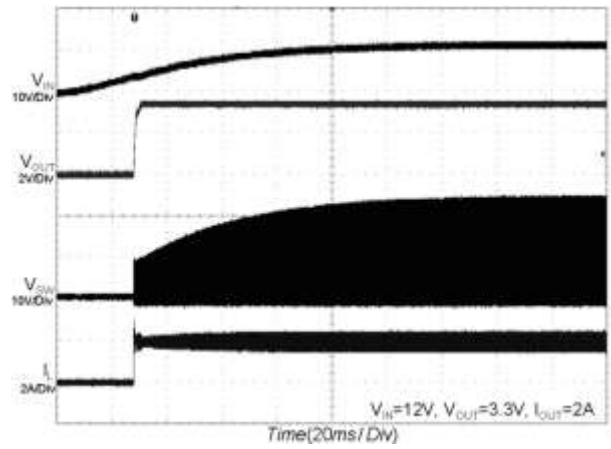


Fig. 2 Start-Up Waveform at $V_{OUT}=3.3V$, $I_{OUT}=2A$

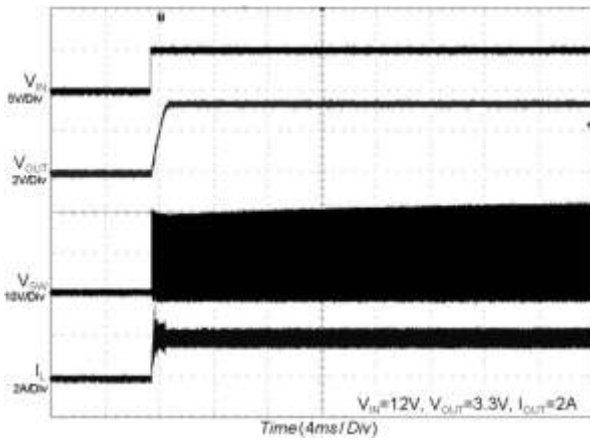


Fig. 3 Start-Up Waveform at $V_{OUT}=3.3V$, $I_{OUT}=2A$

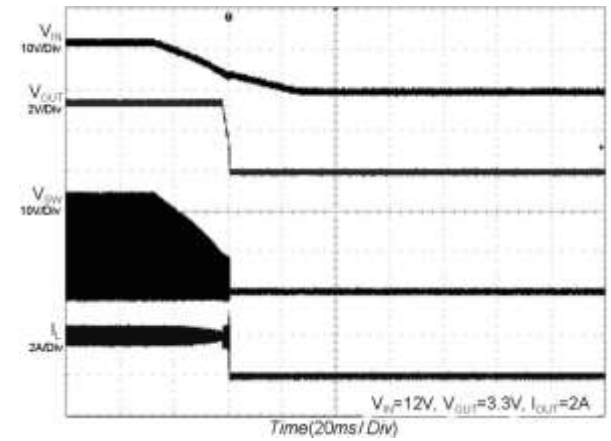


Fig. 4 Shutdown Waveform at $V_{OUT}=3.3V$, $I_{OUT}=2A$

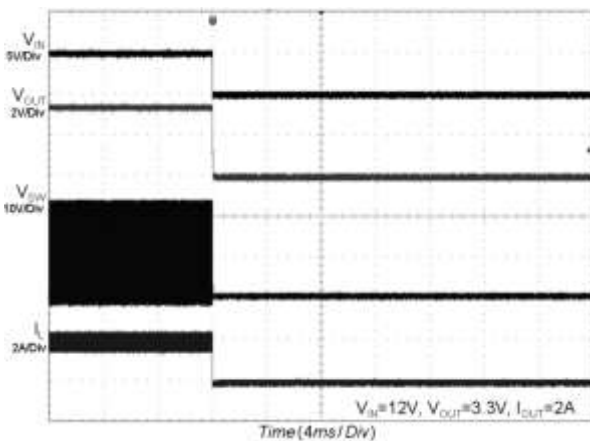


Fig. 5 Shutdown Waveform at $V_{OUT}=3.3V$, $I_{OUT}=2A$

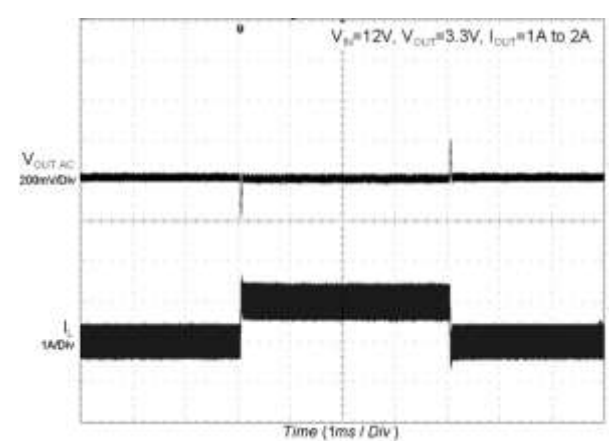


Fig. 6 Load Transient at $V_{OUT}=3.3V$, $I_{OUT}=1A$ to $2A$

■ TYPICAL PERFORMANCE CHARACTERISTICS (Continued)

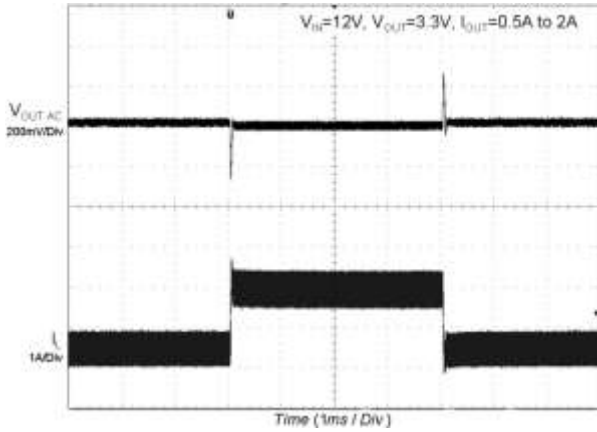


Fig. 7 Load Transient at $V_{OUT}=3.3V$, $I_{OUT}=0.5A$ to $2A$

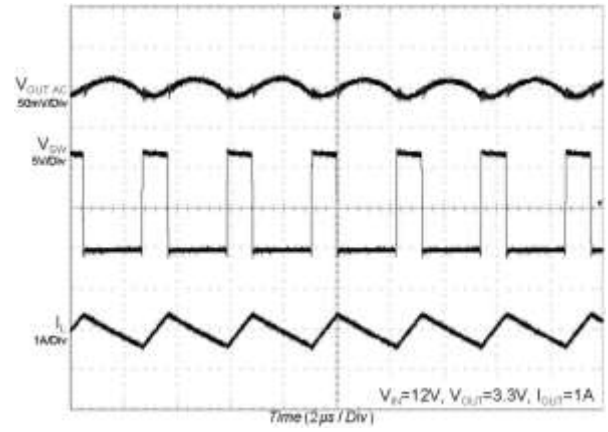


Fig. 8 Stability Waveform at $V_{OUT}=3.3V$, $I_{OUT}=1A$

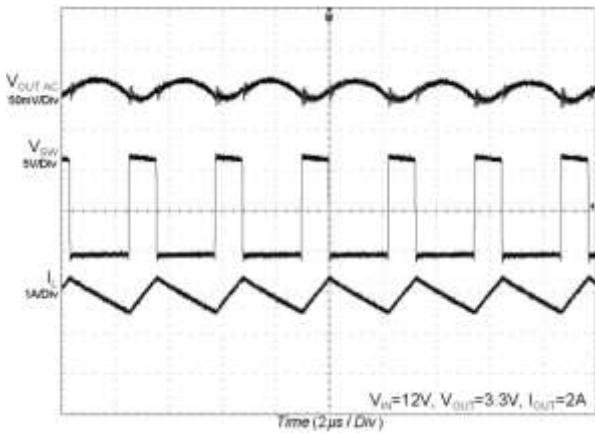


Fig. 9 Stability Waveform at $V_{OUT}=3.3V$, $I_{OUT}=2A$

■ APPLICATION INFORMATIONS

The AIC2862 is a synchronous high voltage buck converter that can support the input voltage range from 4.75V to 23V and the output current can be up to 2A.

Setting the Output Voltage

The output voltage is set using a resistive voltage divider connected from the output voltage to FB. The voltage divider divides the output voltage down to the feedback voltage by the ratio:

$$V_{FB} = V_{OUT} \frac{R2}{R1 + R2}$$

Thus the output voltage is:

$$V_{OUT} = 0.925 \times \frac{R1 + R2}{R2}$$

For example, for a 3.3V output voltage, R2 is 10kΩ, and R1 is 26.1kΩ.

Inductor

The inductor selection depends on the current ripple of inductor, the input voltage, and the output voltage.

$$L \geq \frac{V_{OUT}}{f_{OSC} \cdot \Delta I_L} \left(1 - \frac{V_{OUT}}{V_{IN}} \right)$$

Accepting a large current ripple of inductor allows the use of a smaller inductance. However, higher current ripple of inductor can cause higher output ripple voltage and large core loss. By setting an acceptable current ripple of inductor, a suitable inductance can be obtained from above equation.

In addition, it is important to ensure the inductor saturation current exceeds the peak value of inductor current in application to prevent core saturation. The peak value of inductor current can be calculated according to the following equation.

$$I_{PEAK} = I_{OUT(max)} + \frac{V_{OUT}}{2 \times f_{OSC} \cdot L} \left(1 - \frac{V_{OUT}}{V_{IN}} \right)$$

Soft-Start

The AIC2862 provides the soft-start function. Initially, the voltage at SS pin is 0V. Then an internal current source of 6μA (typ.) charges an external soft-start capacitor. During the soft-start period, the voltage at SS

pin will limit the feedback threshold voltage at FB pin. When the voltage at SS pin is higher than 0.925V, the feedback threshold voltage at FB pin reaches the desired value. The soft-start time can be calculated in accordance with the following equation.

$$t_{SS} = C5 \times \frac{0.925V}{6\mu A}$$

The soft-start capacitor is discharged to GND when the EN pin is connected to GND.

Optional Schottky Diode

A Schottky diode with low forward drop voltage and fast reverse recovery is the ideal choice for better efficiency. The forward drop voltage of a Schottky diode will result in the conduction losses in the diode, and the diode capacitance (C_T or C_D) will cause the switching losses. Therefore, it is necessary to consider both forward voltage drop and diode capacitance for diode selection. In addition, the rating of selected Schottky diode should be able to handle the input voltage and the maximum peak diode current.

Input Capacitor and Output Capacitor

To prevent the high input voltage ripple and noise resulted from high frequency switching, the use of low ESR ceramic capacitor for the maximum RMS current is recommended. The approximated RMS current of the input capacitor can be calculated according to the following equation.

$$I_{CINRMS} \approx \sqrt{I_{OUT(MAX)}^2 \times \frac{V_{OUT}(V_{IN} - V_{OUT})}{V_{IN}^2} + \frac{\Delta I_L^2}{12}}$$

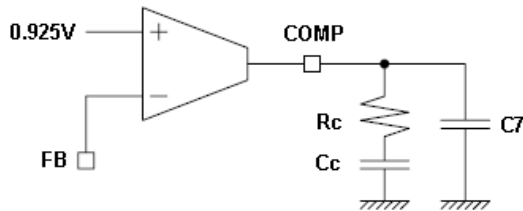
The selection of output capacitor depends on the required output voltage ripple. The output voltage ripple can be expressed as:

$$\Delta V_{OUT} = \frac{\Delta I_L}{8 \times f_{OSC} \times C3} + ESR \Delta I_L$$

For lower output voltage ripple, the use of low ESR ceramic capacitor is recommended. The tantalum capacitor can also be used well, but its ERS is larger than that of ceramic capacitor.

When choosing the input and output ceramic capacitors, X5R and X7R types are recommended because they retain their capacitance over wider ranges of voltage and temperature than other types.

Loop Compensation



In order to avoid the poor output voltage ripple and low efficiency caused by instability, AIC2862 requires a proper external compensation network to compensate its feedback loop. In this external compensation network, the compensation resistor, R_C , and the compensation capacitor, C_C , are used to set the high-frequency integrator gain and the integrator zero. C_7 is used to cancel the zero caused by the output capacitor and its ESR. While using the ceramic capacitor as the output capacitor, C_7 can be omitted due to the small ESR.

The system has one pole of importance, due to the output capacitor, C_3 and the load resistor. This pole is located at:

$$F_{P1} = \frac{1}{2\pi \times C_3 \times R_{LOAD}}$$

The system has one zero of importance, due to the compensation capacitor, C_C and the compensation resistor, R_C . This zero is located at:

$$F_{Z1} = \frac{1}{2\pi \times C_C \times R_C}$$

The system may have another zero of importance, if the output capacitor has a large capacitance and/or a high ESR value. The zero, due to the ESR and capacitance of the output capacitor, is located at:

$$F_{ESR} = \frac{1}{2\pi \times C_3 \times R_{ESR}}$$

In this case, a third pole set by the compensation capacitor, C_7 and the compensation resistor, R_C is used to compensate the effect of the ESR zero on the loop

gain. This pole is located at:

$$F_{P2} = \frac{1}{2\pi \times C_7 \times R_C}$$

※ The values of the compensation components are given in the AIC2862 demo board user manual.

External Bootstrap Diode

When the input voltage is lower than 5.5V or the duty ratio is higher than 50%, an external bootstrap diode between the external BS voltage and the BS pin is recommended to be used for performance improvement. The external BS voltage must be lower than 5.5V. The external bootstrap diode can be the low cost 1N4148.

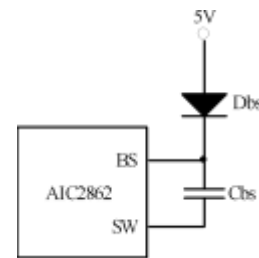


Fig. 10 Optional External Bootstrap Diode

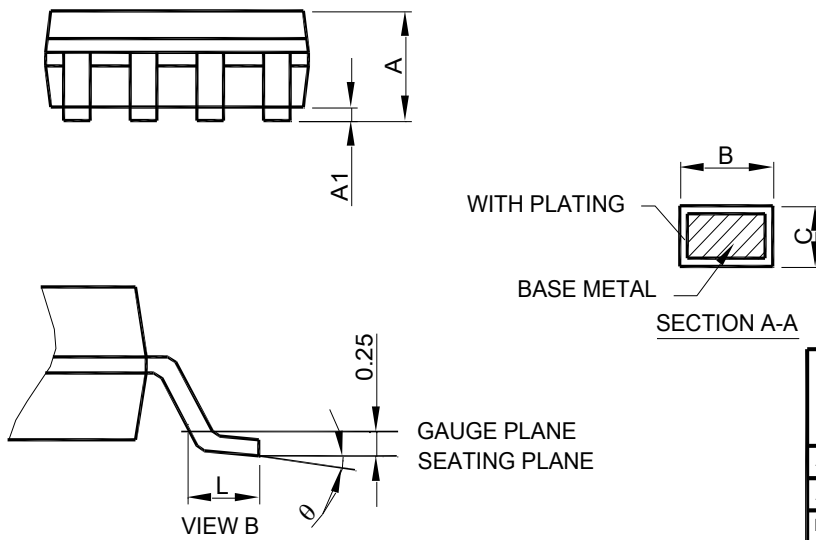
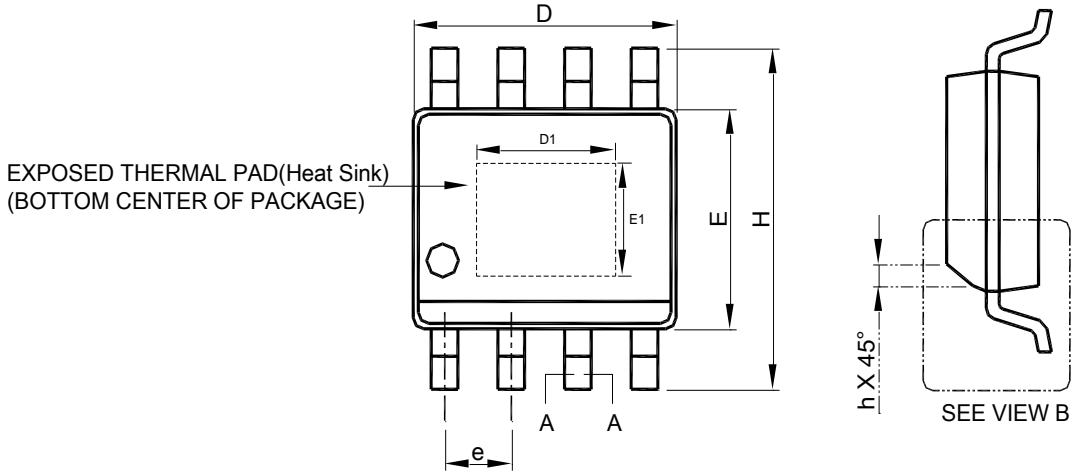
Layout Consideration

In order to ensure a proper operation of AIC2862, the following points should be managed comprehensively.

1. The input capacitor and V_{IN} should be placed as close as possible to each other to reduce the input voltage ripple and noise.
2. The output loop, which is consisted of the inductor, the internal power switch, the Schottky diode and the output capacitor, should be kept as small as possible.
3. The routes with large current should be kept short and wide.
4. Logically the large current on the converter should flow at the same direction.
5. In order to prevent the effect from noise, the IC's GND pin should be placed close to the ground of the input bypass capacitor.
6. The FB pin should be connected to the feedback resistors directly and the route should be away from the noise sources.

PHYSICAL DIMENSIONS

SOP-8 Exposed Pad



SYMBOL	SOP-8 Exposed Pad	
	MILLIMETERS	
	MIN.	MAX.
A	1.35	1.75
A1	0.00	0.15
B	0.31	0.51
C	0.17	0.25
D	4.80	5.00
D1	1.50	3.50
E	3.80	4.00
E1	1.0	2.55
e	1.27 BSC	
H	5.80	6.20
h	0.25	0.50
L	0.40	1.27
θ	0°	8°

- Note :
1. Refer to JEDEC MS-012E.
 2. Dimension "D" does not include mold flash, protrusions or gate burrs. Mold flash, protrusion or gate burrs shall not exceed 6 mil per side .
 3. Dimension "E" does not include inter-lead flash or protrusions.
 4. Controlling dimension is millimeter, converted inch dimensions are not necessarily exact.

Note:

Information provided by AIC is believed to be accurate and reliable. However, we cannot assume responsibility for use of any circuitry other than circuitry entirely embodied in an AIC product; nor for any infringement of patents or other rights of third parties that may result from its use. We reserve the right to change the circuitry and specifications without notice.

Life Support Policy: AIC does not authorize any AIC product for use in life support devices and/or systems. Life support devices or systems are devices or systems which, (i) are intended for surgical implant into the body or (ii) support or sustain life, and whose failure to perform, when properly used in accordance with instructions for use provided in the labeling, can be reasonably expected to result in a significant injury to the user